

# \$699,900 - 17 Thomas Place, Red Deer

MLS® #A2202734

## \$699,900

5 Bedroom, 4.00 Bathroom, 2,275 sqft  
Residential on 0.12 Acres

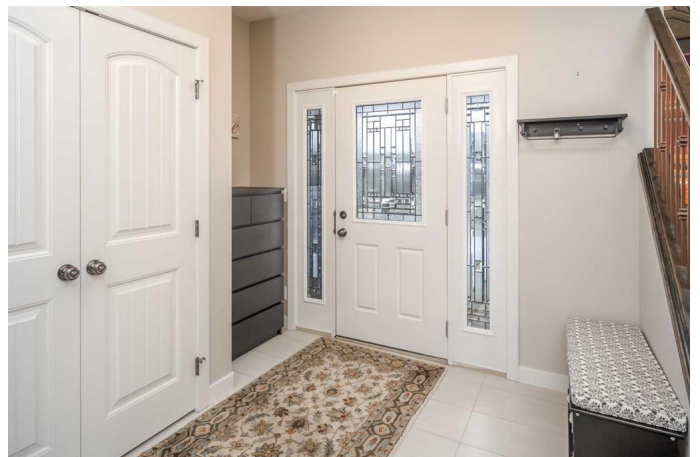
Timberstone, Red Deer, Alberta

Welcome to this Spacious four-bedroom Home with a Finished Basement, South-Facing Backyard, and a back lane. Located in the desirable Timberstone community, this 2,275 sq. ft. two-story home offers four bedrooms plus a bonus room upstairsâ€”perfect for a growing family. The main floor features an open-concept kitchen with granite countertops, stainless steel appliances, a walk-in pantry, and a bright dining area with access to the sunny south-facing backyard. A cozy living room with a gas fireplace, a main-floor office/flex room, and a mudroom with laundry complete the level. Upstairs, the bonus room provides extra space for family time, while the primary suite boasts a walk-in closet and a 5-piece ensuite. The finished basement with heated floor includes a large recreation area, a bedroom, and a 4-piece bathroom, offering even more living space. With rear lane access, a double attached garage, and a prime location near schools, parks, and shopping, this home is move-in ready. Donâ€™t miss outâ€”schedule your viewing today!!

Built in 2011

## Essential Information

MLS® #	A2202734
Price	\$699,900
Bedrooms	5
Bathrooms	4.00



Full Baths	3
Half Baths	1
Square Footage	2,275
Acres	0.12
Year Built	2011
Type	Residential
Sub-Type	Detached
Style	2 Storey
Status	Active

### **Community Information**

Address	17 Thomas Place
Subdivision	Timberstone
City	Red Deer
County	Red Deer
Province	Alberta
Postal Code	T4P 0E5

### **Amenities**

Parking Spaces	4
Parking	Double Garage Attached
# of Garages	2

### **Interior**

Interior Features	Kitchen Island, No Smoking Home, Open Floorplan
Appliances	Dishwasher, Dryer, Electric Range, Gas Cooktop, Refrigerator, Washer
Heating	Forced Air
Cooling	None
Fireplace	Yes
# of Fireplaces	1
Fireplaces	Gas Log
Has Basement	Yes
Basement	Finished, Full

### **Exterior**

Exterior Features	Lighting, Playground, Private Entrance, Private Yard
Lot Description	Back Lane, Back Yard, Landscaped
Roof	Asphalt Shingle
Construction	Wood Frame

Foundation            Poured Concrete

### **Additional Information**

Date Listed            March 18th, 2025

Days on Market        23

Zoning                 R1

### **Listing Details**

Listing Office           Homecare Realty Ltd.

Data is supplied by Pillar 9â„¸ MLSÂ® System. Pillar 9â„¸ is the owner of the copyright in its MLSÂ® System. Data is deemed reliable but is not guaranteed accurate by Pillar 9â„¸. The trademarks MLSÂ®, Multiple Listing ServiceÂ® and the associated logos are owned by The Canadian Real Estate Association (CREA) and identify the quality of services provided by real estate professionals who are members of CREA. Used under license.